



Atlanta Public Schools **BHES**



Renovations and Modifications to Beecher Hills Elementary School



AGENDA

Project committee #1 Oct 5, 2017

1. **BRPH *Introduction***
2. **Project scope / Needs**
3. **Design Analysis**
4. **Schematic Solution**
5. **Next steps moving forward**

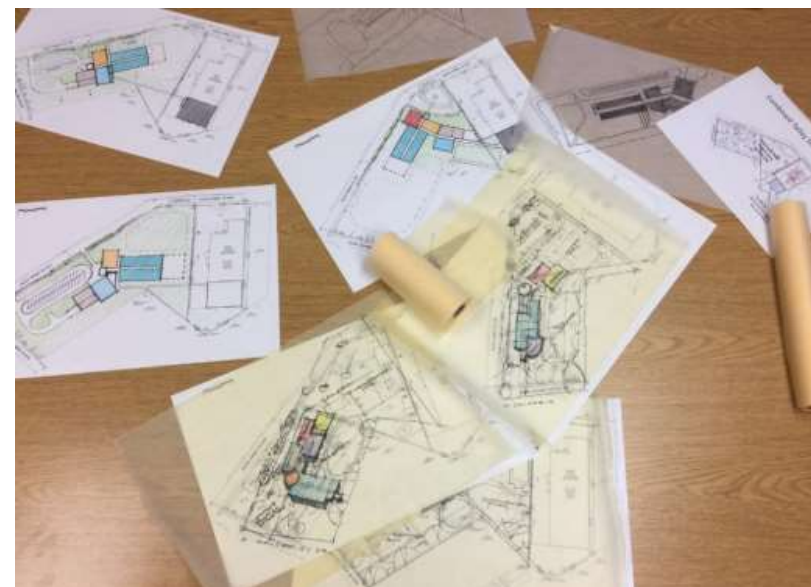
BRPH

- Proven, Dedicated, and Experienced Project Team
- Designed 100+ Gymnasiums
- Long Term Relationship and Commitment to APS
- Experience in K-12 Education Design and 21st Century Learning Facilities



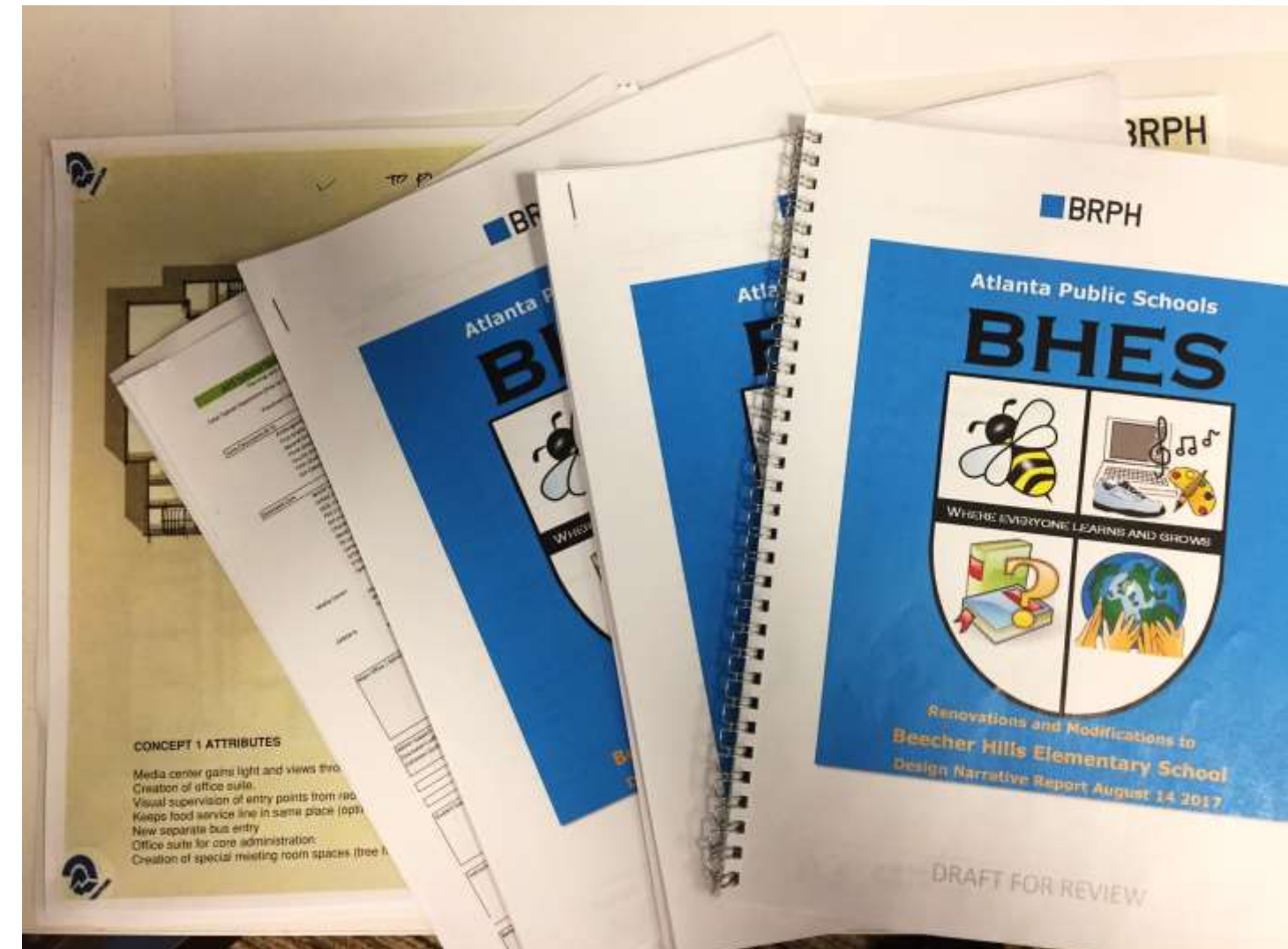
A Culture of Teamwork

- Collaborative Process that starts with APS and Beecher leadership
 - Establishment and Commitment to Project Vision Goals & Clear Objectives
 - Adherence to Program, Budget and Schedule Constraints
- Partnership with Representatives & Stakeholders
- Community Engagement Throughout the Design Process
- Collaboration with CM to Define & Manage Project Scope



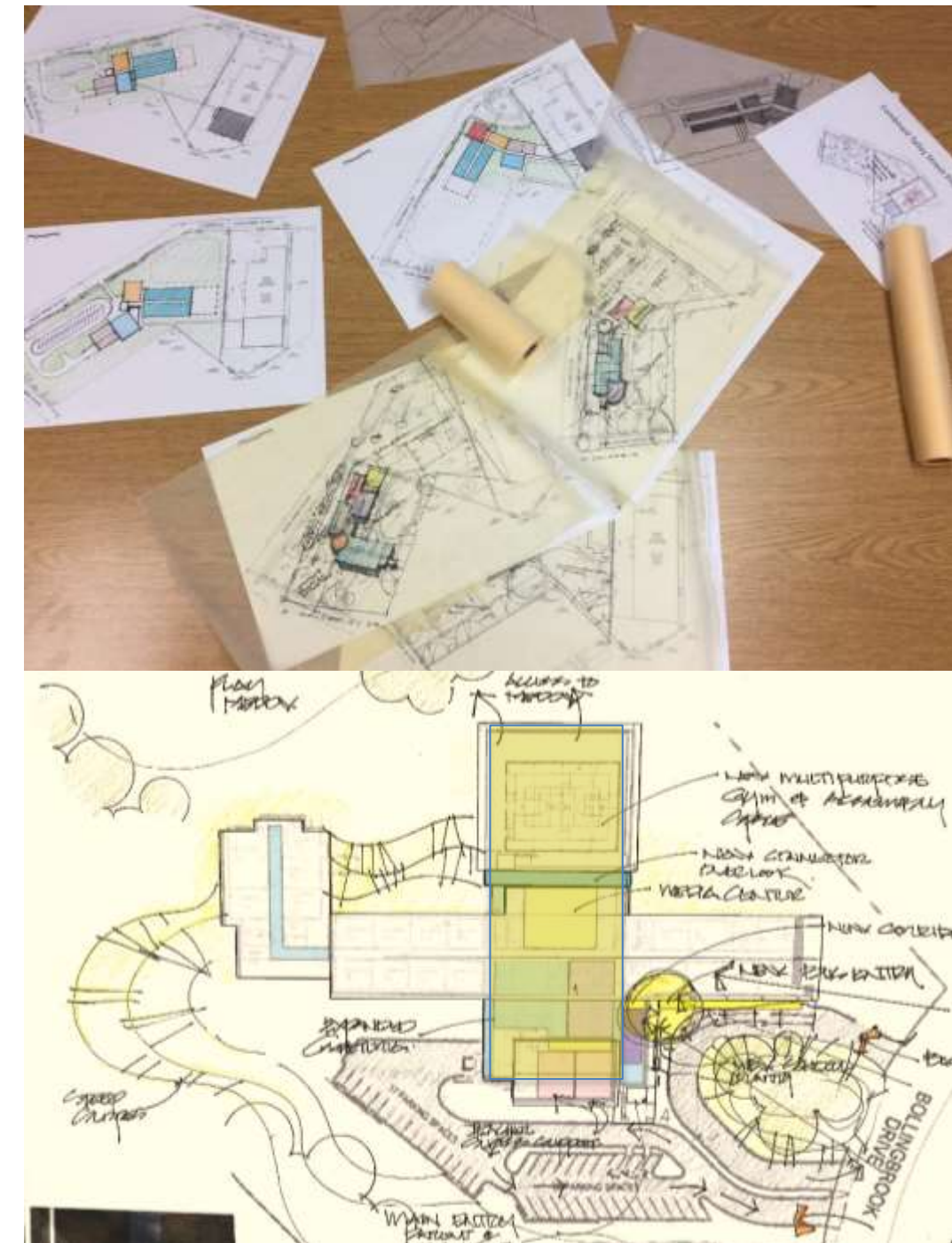
- Construct new multi-purpose gymnasium
- Interior renovations primarily in central area, including backfill of multipurpose room
- Improve building identity, site circulation, and parking
- Improve security and main office accessibility
- Improve hardscape, landscape, and signage
- New roof HVAC & Door hardware
- Improved security through environmental design

Design Narrative



Guiding Principles:

- Simplicity and directness of approach.
- Capitalize on unique aesthetic, site, and materials to create a holistic and unified design and identity.
- Create a dynamic “heart” consisting of media. Multi use, teacher resource, cafeteria and admin. offices.
- Designed to minimize disruption.





Existing Attributes

- Unique hill-top site set between wooded park and neighborhood
- Unique building architecture consisting of low horizontal forms and use of natural materials

Goals:

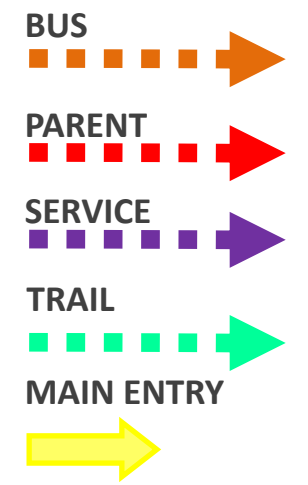
- Capitalize on existing assets to provide a clear and improved building both functionally and aesthetically



Ranking of Top 4 Needs

(From previous meetings)

1. New multi-purpose gymnasium
2. Provide administrative and teacher support spaces.
 - Student support suite
 - Instructional support offices
 - Parent center
3. Improve cafeteria
 - Move to old multi use space
4. Site Improvements and Identity



**POTENTIAL ADDITION AREA
SITE**

- Located in southwest Atlanta, the existing school is imbedded within the scenic Beecher Hills community.

CHALLENGES

- Sloping Site Topography around the building with limited access to the back side of the building.
- Limited internal building access and secure entry.
- Beltline Spur's close proximity to site with dramatic grade change below parking level.

OPPORTUNITIES

- Reorganize internal Multipurpose Space and Administration to provide improved and secured entry.
- Utilize addition to provide improved circulation between levels and access to playfields.



Benefits:

- Easily accessible and adjacent to parking.
- Similar location to existing Multipurpose along front of school.
- Potentially connect the lower level to the main level, providing new elevator access.

Challenges:

- Heavily impacted by the proximity of the new Beltline Trail Spur to the south of the site and sharply changing topography
- Gymnasium addition could potentially be reduced to under the minimum 8,000 SF standard.
- Addition would block lower level field access for fields



Benefits:

- Easily accessible to bus loop.
- Direct connection to single story portion of the building.
- Provides higher profile for building from neighborhood.

Challenges:

- Heavily impacted by the proximity of the Bollingbrook Drive the property line and dramatically changing grade from the street to the building level.
- Gymnasium addition could potentially be reduced to under the minimum 8,000 SF standard.
- Gymnasium addition would be out of scale and against the low profile architectural character of the existing school.



Benefits:

- Full sized Gymnasium can be easily accommodated.
- Direct connection to center of school.
- Take advantage of existing grade change to lower gym floor to provide easy access to lower level of existing building and access to the playfields.

Challenges:

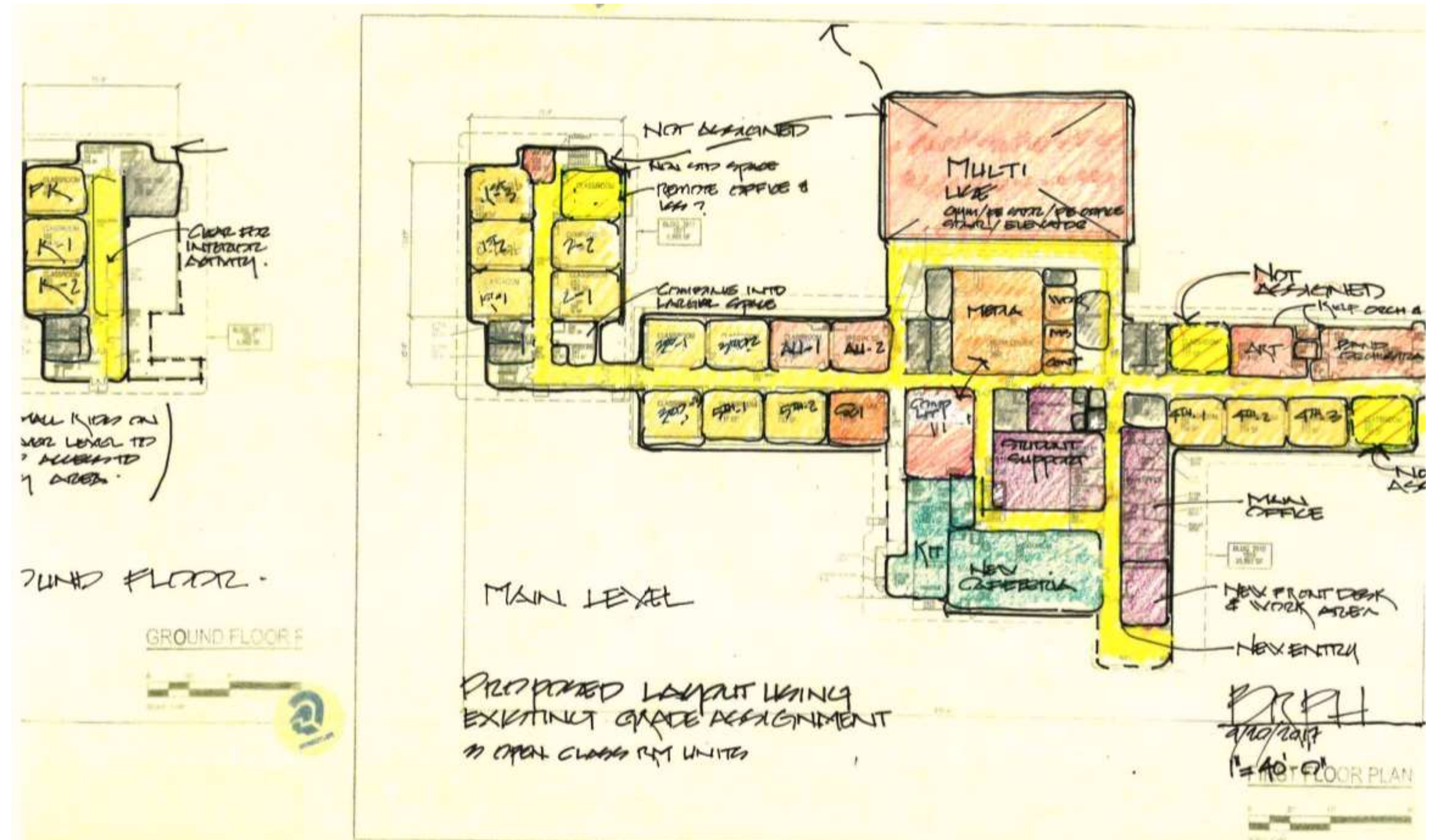
- Limited site access around north side of existing building.
- Backside of side has a 20' grade change and is heavily wooded.



SITE OPTION 3

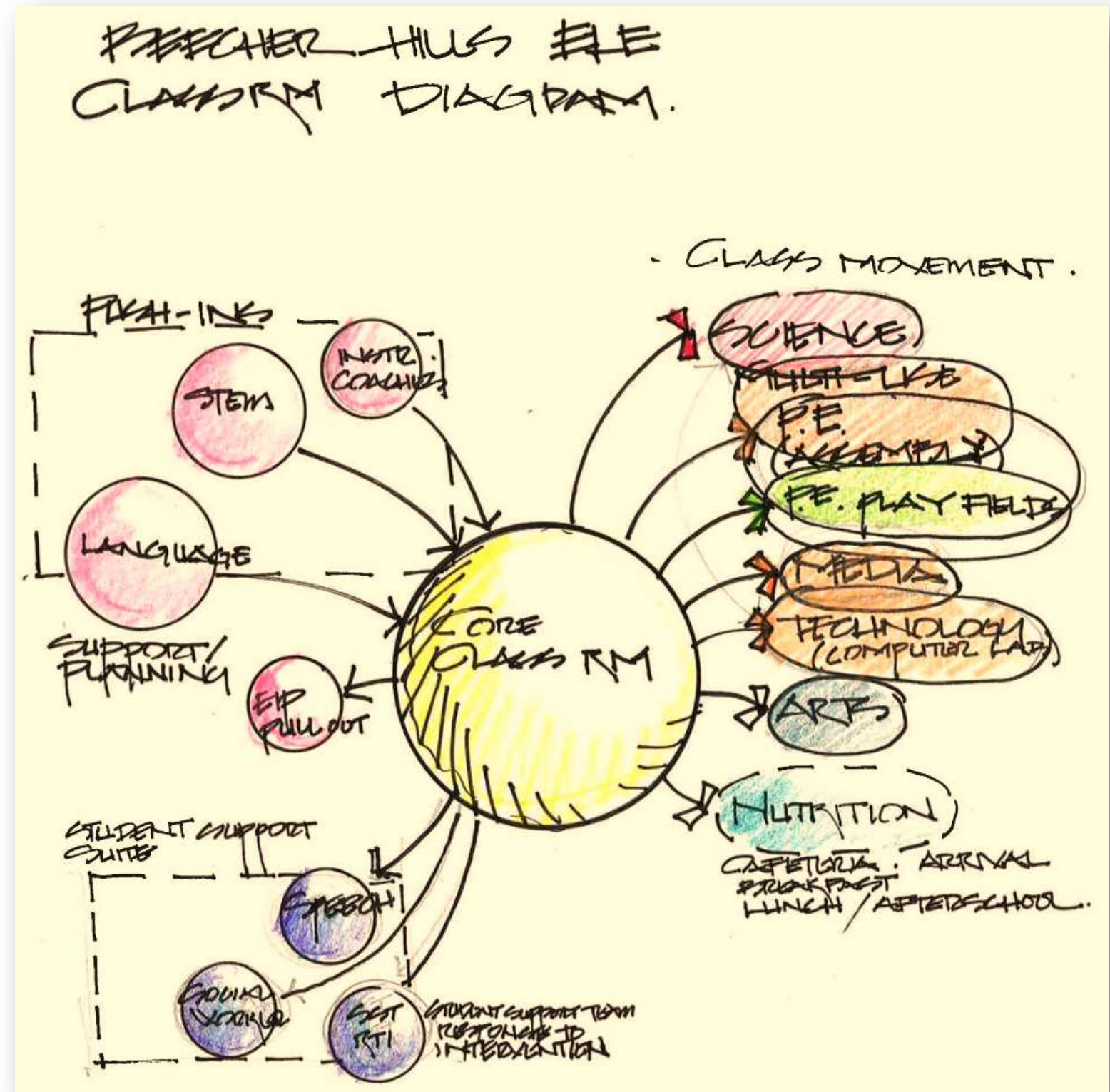
- WORKS WITH BUILDING AESTHETIC
- ALLOWS CONTINUED OPERATION
- PROVIDES BETTER ACCESS TO PLAYFIELDS.
- ALLOWS NATURAL LIGHT FOR MEDIA CENTER.
- EXTERIOR CLASSROOM SPACES ARE CREATED
- NEW BUS CANOPY ADDS TO AND ORGANIZES ENTRY APPEARANCE.
- EXISTING TRAIL IMPROVEMENTS ARE LEFT INTACT

- **Space Program Analysis:**
- Sufficient class room space for projected school population
- Teacher and student support space is deficient
- Test-fit indicated several opportunities to use the facilities space more efficiently.

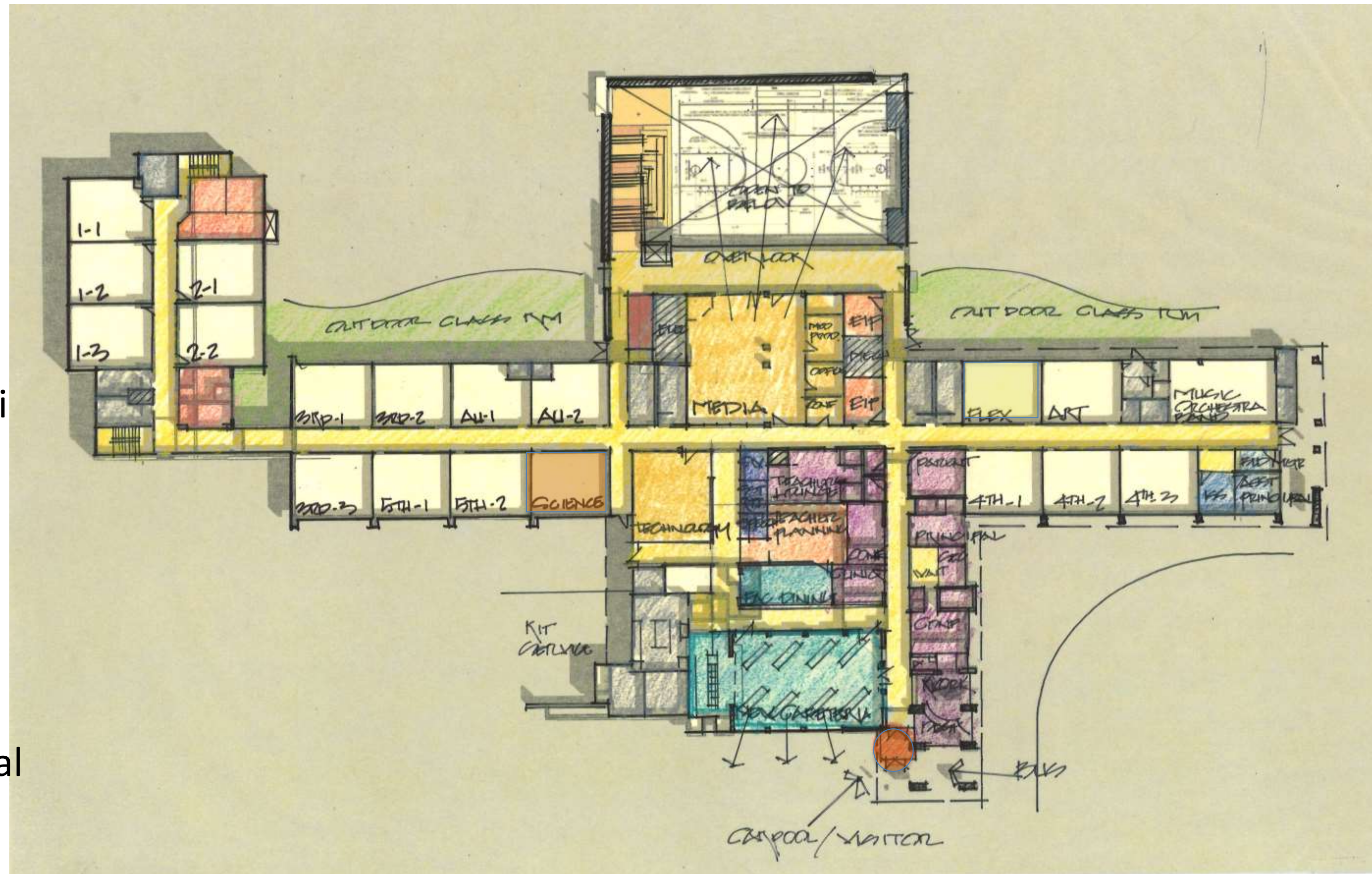


International Baccalaureate program:

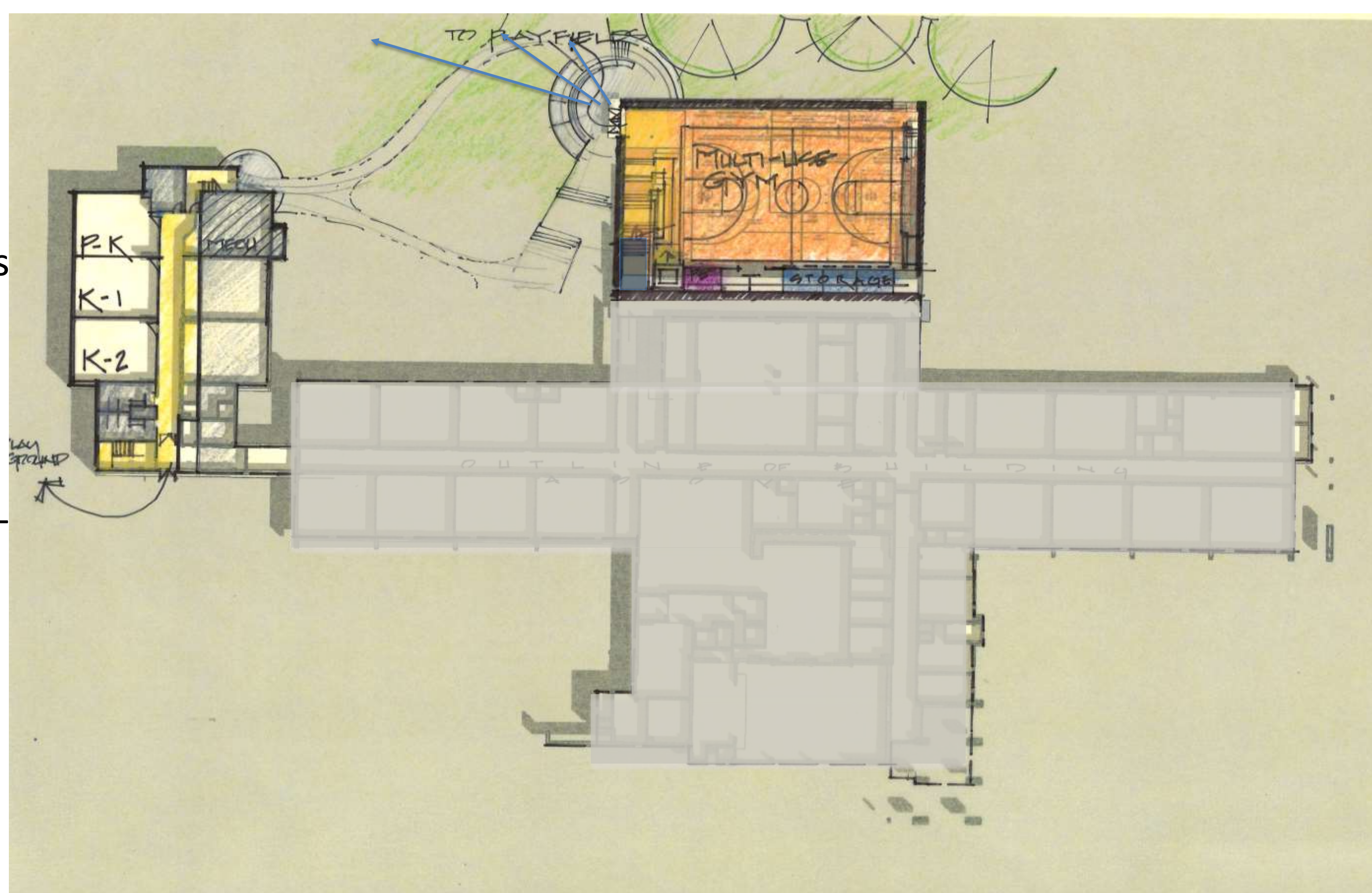
- Focus on the classroom and core teacher.
- Stem Language and instructional coaches “push in”.
- Class movement for arts technology/media PE and Cafeteria.
- **Support spaces for teacher planning instructional coaches needed.**



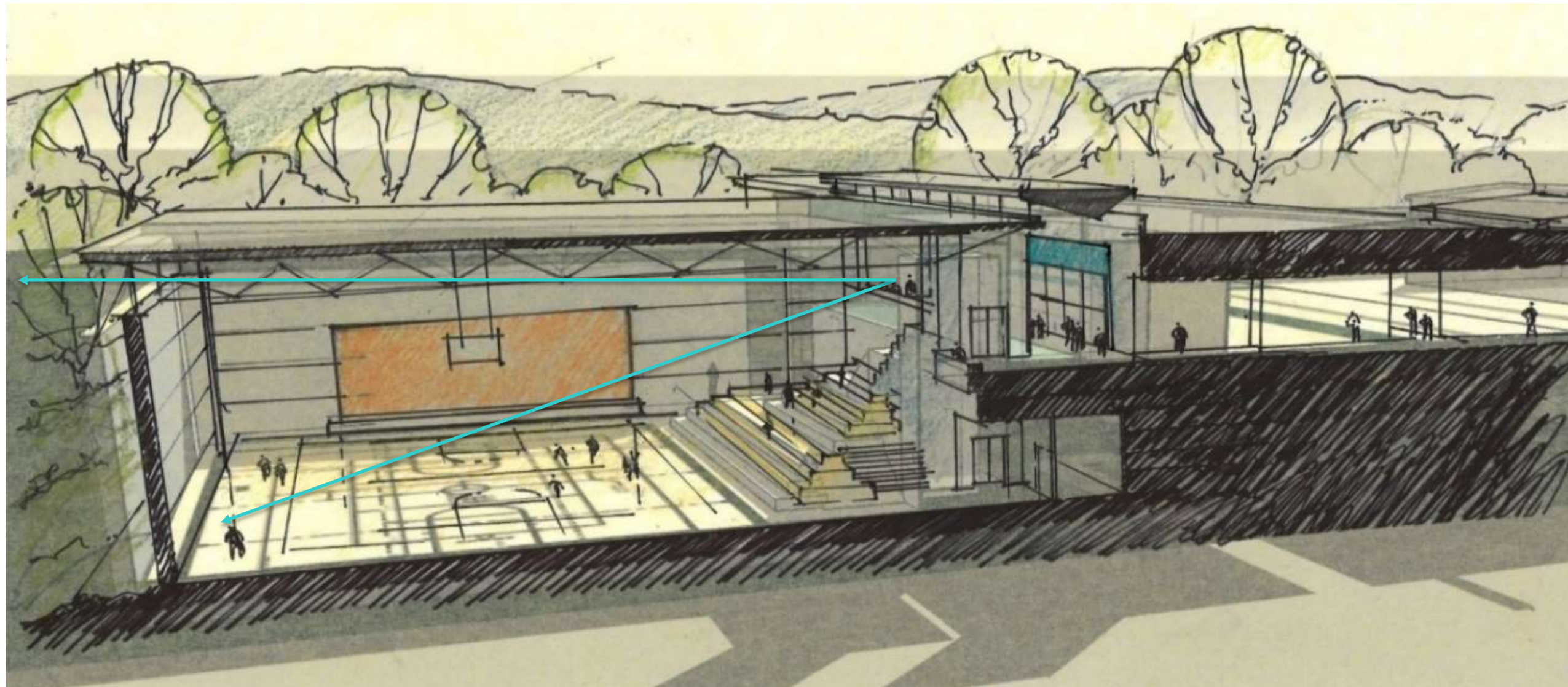
- **Main level:**
- Group technology (computer lab) with media center
- Media center gets light and views through multi use overlook
- Cafeteria moves into multi use space
- Main Office suite expands to new entrance.
- Appropriate instructional support spaces located

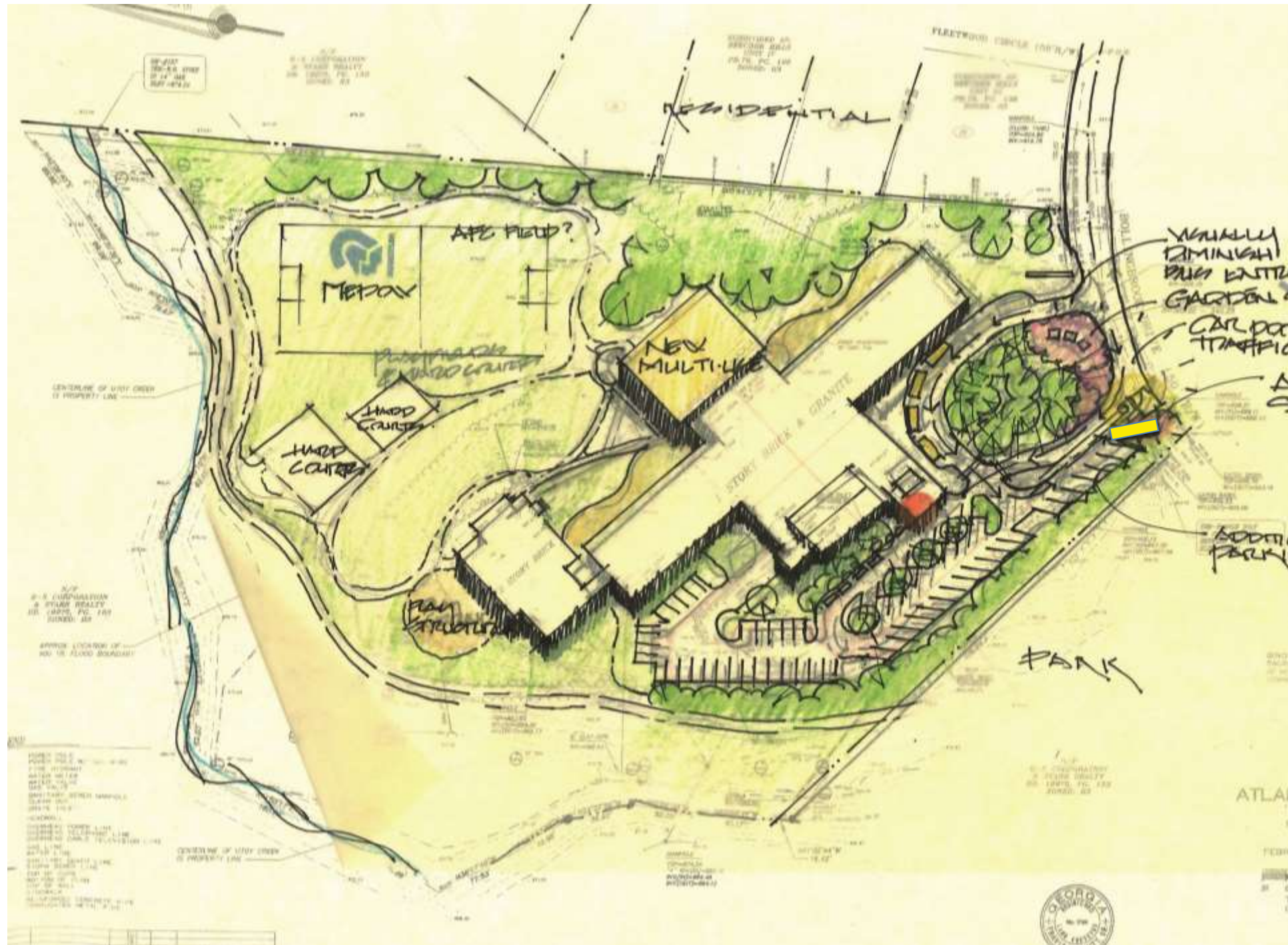


- **Lower level:**
- Group Pre-K and kindergarten with access to play equipment
- Multi-use provides structures and ADA access to play fields
- At grade connection Pre-K & Kindergarten wing.



- Multi-use:
- Media center gets light and views through multi-use gym overlook
- A structured path to playfields is created
- Addition organizes and improves on existing school plan.





Site issues:

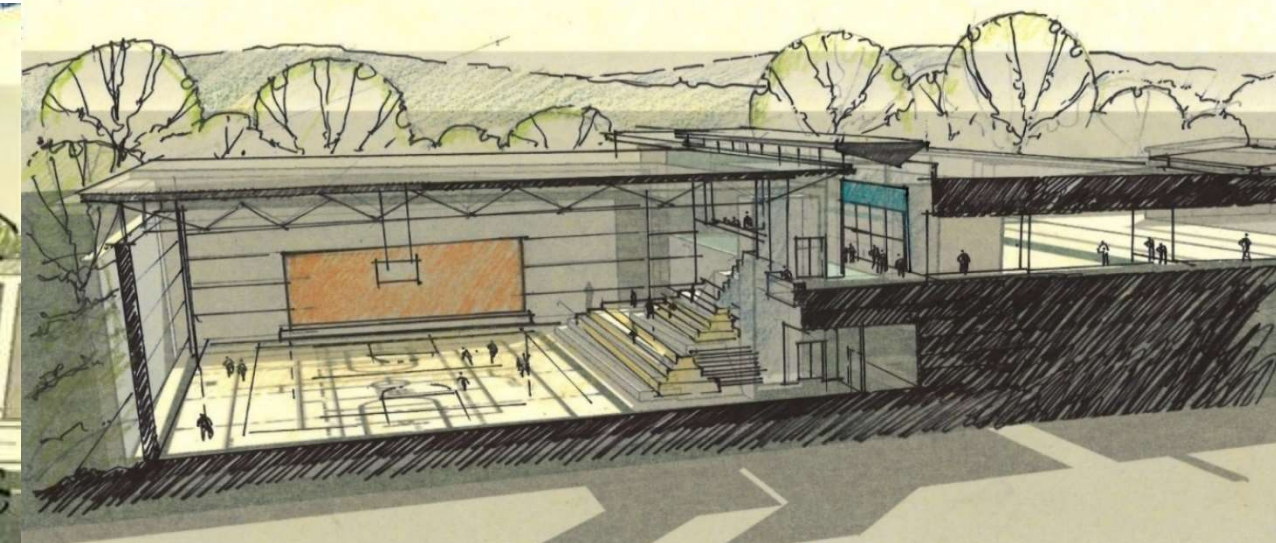
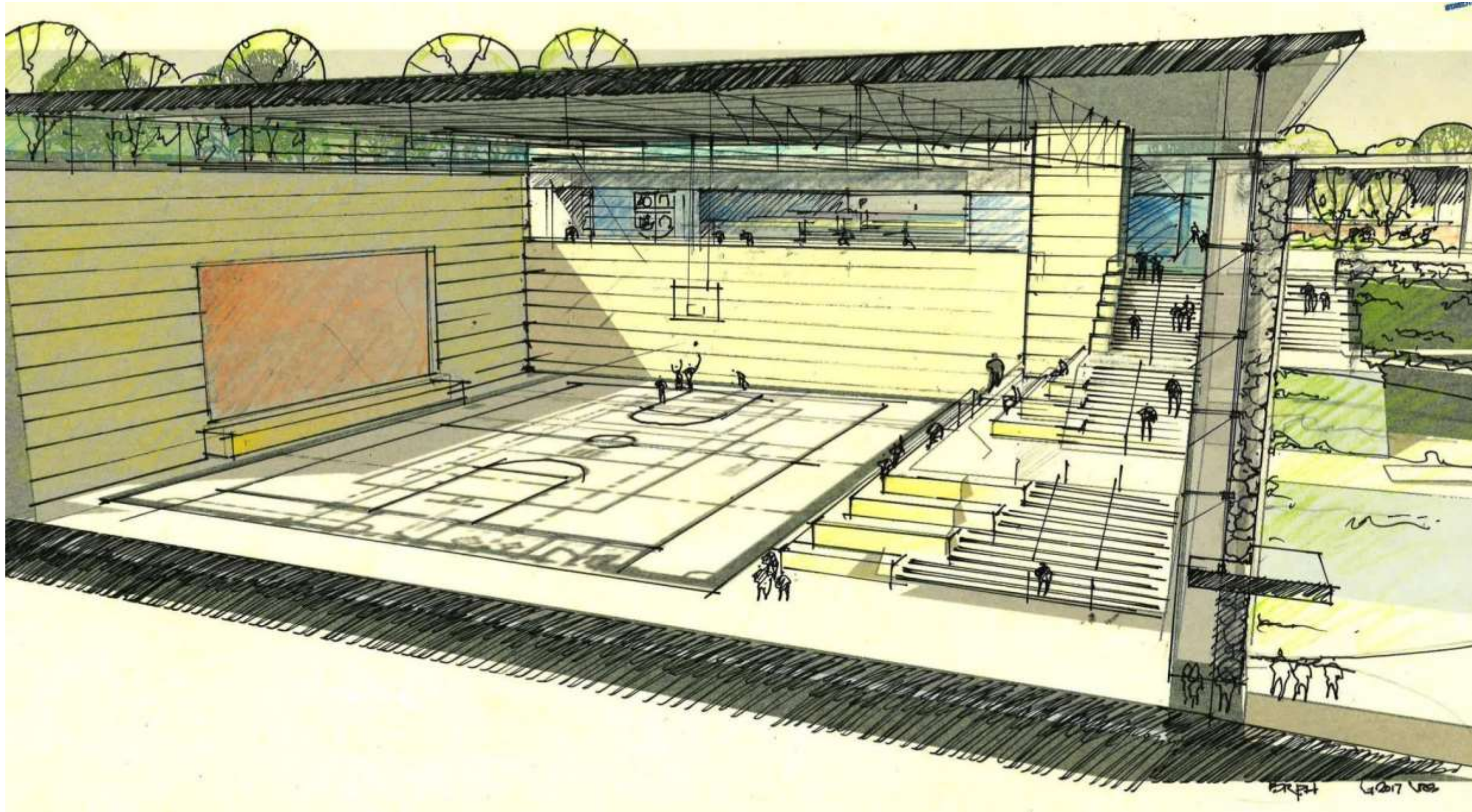
- Organize entry(s) to make visitor's entry more prominent.
- Highlight BHE blocks as a dominant feature. (Keep hill)
- Organize traffic and parking
- Main entry to be a visible "beacon"
- Front office to be able to visually supervise front vehicular areas of the school.
- Multi-use gym provides a structured pathway to the "meadow" playfields
- Capture outdoor spaces as extension of classroom space.

Ideas:

- Natural Lighting and access to views.
- Stairs as social connectors and informal learning spaces.
- Connection with nature as an extension of the classroom.



Ideas.





Preliminary Massing and Functional zoning

Preliminary Sectional; Perspective

Building Perspective Section



What's next?

- Incorporation of comments gathered today in schematic package
- Construction budget \$ 8.5 million
- Schedule
 - Complete schematic Design for APS approval
 - APS to select CM at risk
 - Complete Design and Development and Construction document packages for APS approval
 - Submit to GA DOE review
 - Prepare bid documents
 - Construction June, 2018
 - Occupy new school, Fall, 2019

BHES



Renovations and Modifications to Beecher Hills Elementary School



Questions?